





Come and experience the magic of Courchevel...

Always a warm welcome at the magnificent Chalets – Le 1946 – and – Le 1992 – your residence for a unique stay in Courchevel Le Praz.

Drawing upon my family's heritage and the expertise gained during 10 years working in luxury hotels, my knowledge and experience is at your service for an exceptional holiday in the mountains. Offering our guests a truly personalised service worthy of the palaces in which I gained our experience remains my top priority throughout your stay.

Take the opportunity to plunge into the magic of the largest ski area in the world and discover the warm and welcoming atmosphere of our beautiful chalets.

Sylvain René-Fischl



Chalet Le 1946

250
m2

10/ 12
Adults

5/ 6
Bedrooms

150
Meters from
the slopes

1
Indoor wellness
area & Ski room



A unique chalet steeped in history

TRADITION, SHARING AND RENOVATION

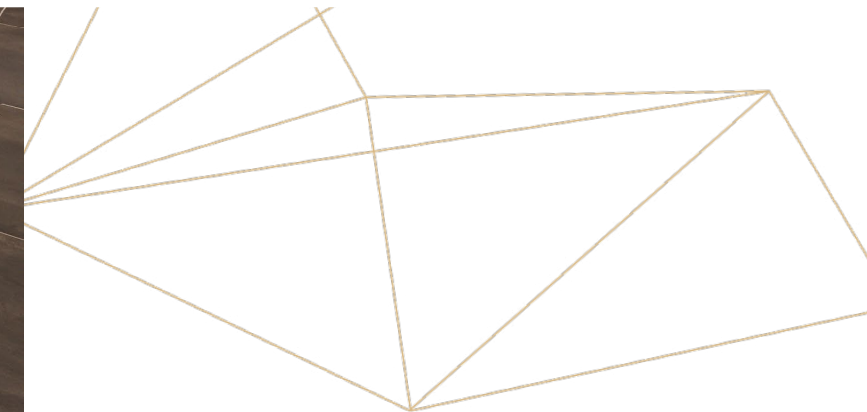
Having spent our childhood in Le Praz, we know this charming mountain village by heart. Our home as we grew up and as the legendary resort of Courchevel developed, we could certainly share plenty of secrets!

Our grandparents, Angèle and Louis Sallier, were emblematic figures of this mountain village which has now become a ski capital, one of the most popular and well-known in the world.

This chalet is steeped in our family's history: built on Mamie Angèle's garden in 2001, then completely renovated in 2021.

Named – Le 1946 – it pays homage to the creation of the resort, to the construction of the first ski lift and the first grooming machine, and especially to our dear Papi Louis who contributed with his own hands.

It is perfectly located, close to village shops, bars and restaurants and the new gondola that gives you access to Courchevel 1850 in just 8 minutes. Our chalet, authentic yet contemporary, will charm you with its history and its sense of luxury.



Kitchen & Dining Room

SHARE WONDERFUL MOMENTS WITH FAMILY OR FRIENDS

With reclaimed wood and Zimbabwe granite, the open kitchen of your chalet has a central island for space and comfort: gather around after skiing for a delicious afternoon tea that we have prepared in advance. For coffee and wine lovers, a Jura bean coffee machine is available for self-service, as well as a wine cellar with an excellent selection. The dining room with large table seating up to 14 people sets the scene for many happy memories for you and your nearest and dearest.



Living room

WARM UP BY THE FIRESIDE

A comfortable contemporary Italian sofa, a beautiful stone fireplace with the crackling of a wood fire... what better way to relax on a long winter evening ?

Thanks to the selection of TV platforms we provide, you have a huge choice of movies and series for the whole family's enjoyment.





Violette

A WARM ATMOSPHERE

This bright bedroom is one of the largest in the chalet and is styled with gorgeous orange tones. There is a south-facing balcony, and the king-size bed can be separated into twins. The bathroom features a spacious double bathtub, ideal for relaxing at any time of the day.

18m² bedroom
King-size bed 180cm x 200cm



Carline

THE MASTER BEDROOM

Combining authentic mountain style with contemporary chic, this superb first floor bedroom features a separate WC, a gorgeous spacious shower room with double basins which opens onto the bedroom, and soothing muted tones that reflect the starlit winter sky. This master bedroom is sure to delight you.

21m² bedroom
King-size bed 180cm x 200cm or two single beds



Sabot de Venus

SUNRISE ON THE BALCONY

This beautiful room, elegantly clad with wood, has a large balcony from which to appreciate the first rays of the sun. Equipped with a spacious bathroom with double basins, and a desk for those who want to stay connected during their mountain holiday, this sunny room is sure to please. With its king-size bed you can be sure to get a great night's sleep.

19m² bedroom
Queen Bed 160cm x 200cm or two single beds





Gentiane

A PERFECT COCOON

Though this bedroom is the smallest room in the chalet and designed for use by our youngest guests, it is nonetheless very comfortable and well-appointed. This little cocoon has a skylight which will take guests young and old alike on a journey into an enchanted universe.

*15m² bedroom
Queen bed 160cm x 200cm*



Edelweiss

A HAVEN OF PEACE

A high ceiling and spacious balcony lend this room a timeless charm, which is also functional with plenty of storage, an adjoining bathroom and one of the most comfortable queen beds available. Take a moment to pause on the balcony and admire the snowy forest of Le Praz in front of you, breathing in the scent of pine essence on a sunny day.

*15m² bedroom
Queen bed 160cm x 200cm or two single beds*

Anémone

PURE CALM

In occupancy 6 bedrooms only

This is a beautiful room, in an atypical style, with its bathroom and two beautiful openings to wake you up with the first rays of the sun. Ideal for baby to rest, we can install a baby cot for you. But we have also thought of your peace of mind with a Queen Size bed which will ensure beautiful nights.

*17m² bedroom
Queen size bed 160cm x 200cm*



EQUIPMENTS

- 6-seater indoor hot tub
- Sauna
- Hammam
- Bath towels
- Welcome products
- Bluetooth speaker



Wellness area

RELAX ...

Sauna, hammam, indoor hot tub overlooking the mountains, we have thought of everything to help you unwind! This cocooning space is entirely dedicated to your well-being.

Herbal teas, dried and fresh fruits, not to mention a Bluetooth speaker to play the music of your choice, all you have to do is relax and enjoy.

Ski-room

SKIER DANS LES MEILLEURS CONDITIONS

Au réveil, votre matériel sera prêt et vos chaussures auront été chauffées pendant la nuit. Les pistes n'attendront plus que vous ! Seul lieu de rencontre avec le chalet – Le 1992 – il vous donnera l'occasion de partager vos expériences.

Boissons et barres céréales à disposition, tout est pensé pour que vous puissiez profiter au maximum des 600 km de pistes de ce majestueux domaine skiable des 3 Vallées. Ski aux pieds, il est l'heure de se laisser glisser ...



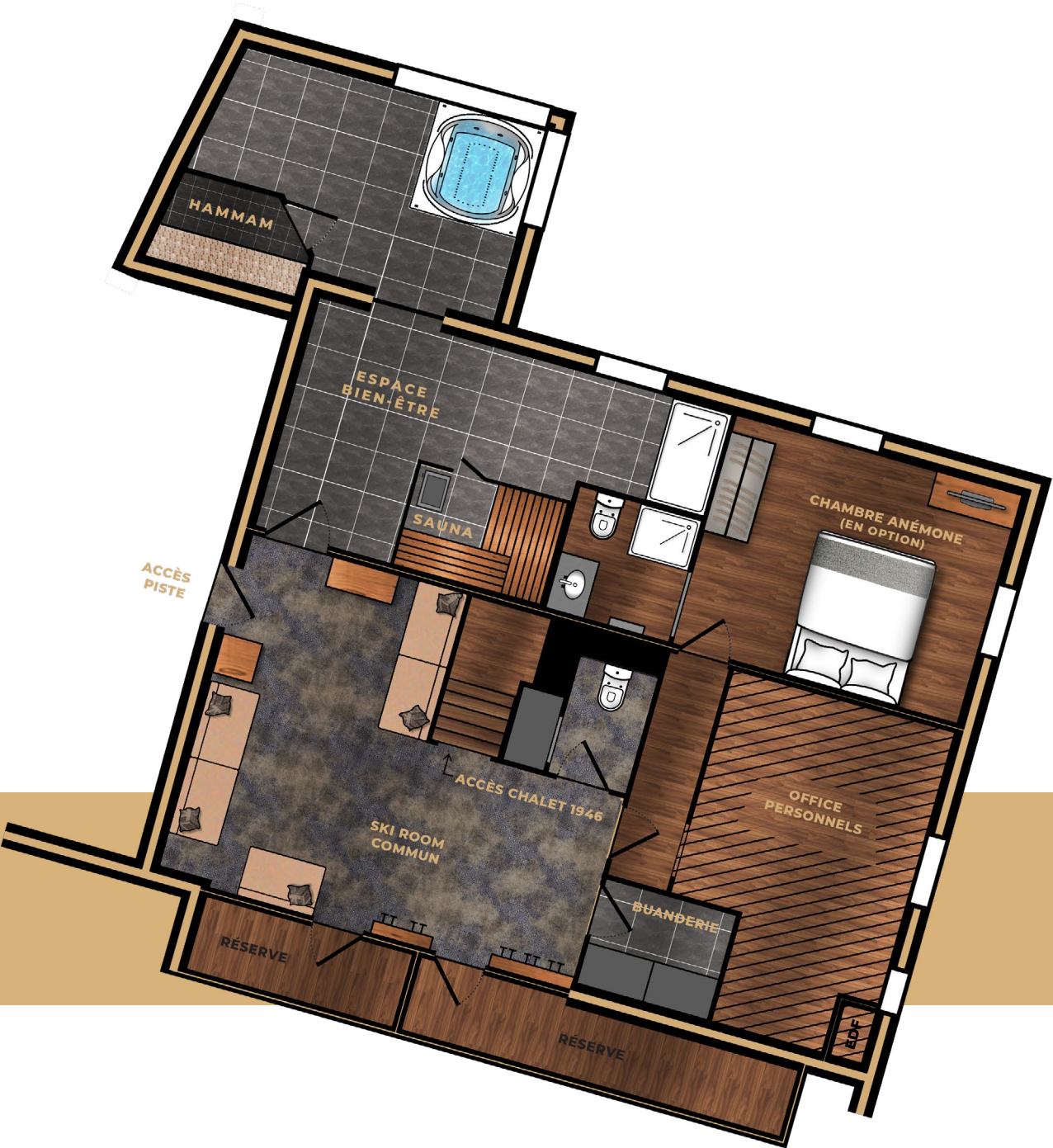
LES ÉQUIPEMENTS

- Sèche-chaussures
 - Casiers à skis
 - Rangements pour le matériels
 - WC
- BUANDERIE COMMUNE
AUX DEUX CHALETs
- Lave-linge
 - Sèche-linge
 - Fers et planches à repasser



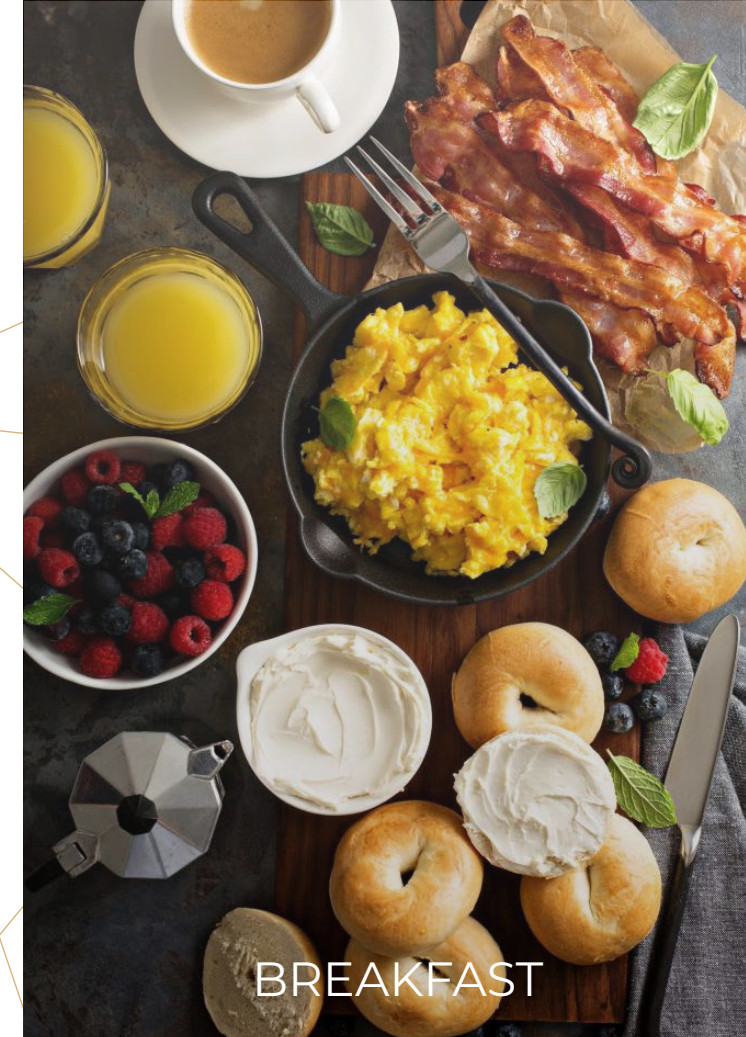
Imagine yourself at Chalet le 1946!

Floorplans of Chalet - Le 1946



A MAGICAL AND TAILOR-MADE HOLIDAY

From your arrival and throughout your stay, you will benefit from an attentive, discreet and warm welcome. Going beyond the basics, our high quality service is included to offer you the best possible experience during your getaway with family or friends.



BREAKFAST

The perfect start to each day; a breakfast carefully prepared by our staff and served directly to the table – coffee, fruit juice, cakes, pancakes, scrambled eggs...

Always at your service, we are flexible to your needs and wants



HOUSEKEEPING

For your convenience, our team will take care of the daily housekeeping of bedrooms and bathrooms, as well keeping your chalet neat and tidy.

Halfway through your stay we will discreetly provide a sheet change



AFTERNOON TEA

When you arrive back after skiing, we will provide a delicious afternoon tea, including local specialties.

A different treat each day after a tiring day on the mountain.

Le 1946



SERVICES INCLUDED

Flowers and Champagne upon your arrival.

American breakfast prepared by our staff.

Tea time with homemade cakes or cakes prepared by our local artisans.

A top-of-the-range coffee machine from the Jura brand, offering a widechoice of drinks, self-service.

Daily maintenance of your chalet and change of sheets and linen once a week.

Daily preparation of the fireplace.

Unlimited access to newspapers via the Press-Reader app.

Many French and international channels. Also take advantage of Netflix, Canal + and •Sky Sport to follow all your sporting events.

Your ski equipment delivered directly to the ski-room of the chalet with our partner •Olympic Sport.

Baby welcome including: cot, night light, high chair, meal kit, adapted bath, bath thermometer, changing mat and toilet reducer.

Home kitchen including: washing up liquid, dishwasher tablets, tea towels, sponges, salt, pepper, sugar, olive oil and vinegar.

At your service and for any advice, our staff is available on site every day until 4:00 p.m.

To celebrate the end-of-year holidays, we are installing a beautifully decorated Christmas tree in your chalet.



Pleasures of the table

GASTRONOMIC TREATS

Enjoy an exceptional meal with all the comfort of being at home: our chalet chefs, rigorously selected by us will concoct inventive gourmet menus (including for vegetarians and children).

Alongside these gastronomic treats, you will have the pleasure of discovering a handpicked selection of reds, whites and champagnes, chosen by the head sommelier Laurent Naudot especially for our wine cellar.

Or why not take the opportunity to order exclusive dishes selected by us from our local partner restaurants, which will be delivered to your chalet. If you wish, let our team look after you and relax with your family and friends around a table set according to your meal.



CHALET CHEF



CATERING DELIVERY SERVICE



WINE AND CHAMPAGNE LIST



The joy of Snow

SLOPES

For winter sport lovers, make the most of the know-how from the family run OLYMPIC SPORT shop. We will deliver it free of charge to the ski-room, after you have had your equipment fitted in store.

Enjoy the slopes as quickly as possible, the new gondola that gives you access to the slopes and to Courchevel 1850 in just 8 minutes is located a few steps from your chalet.

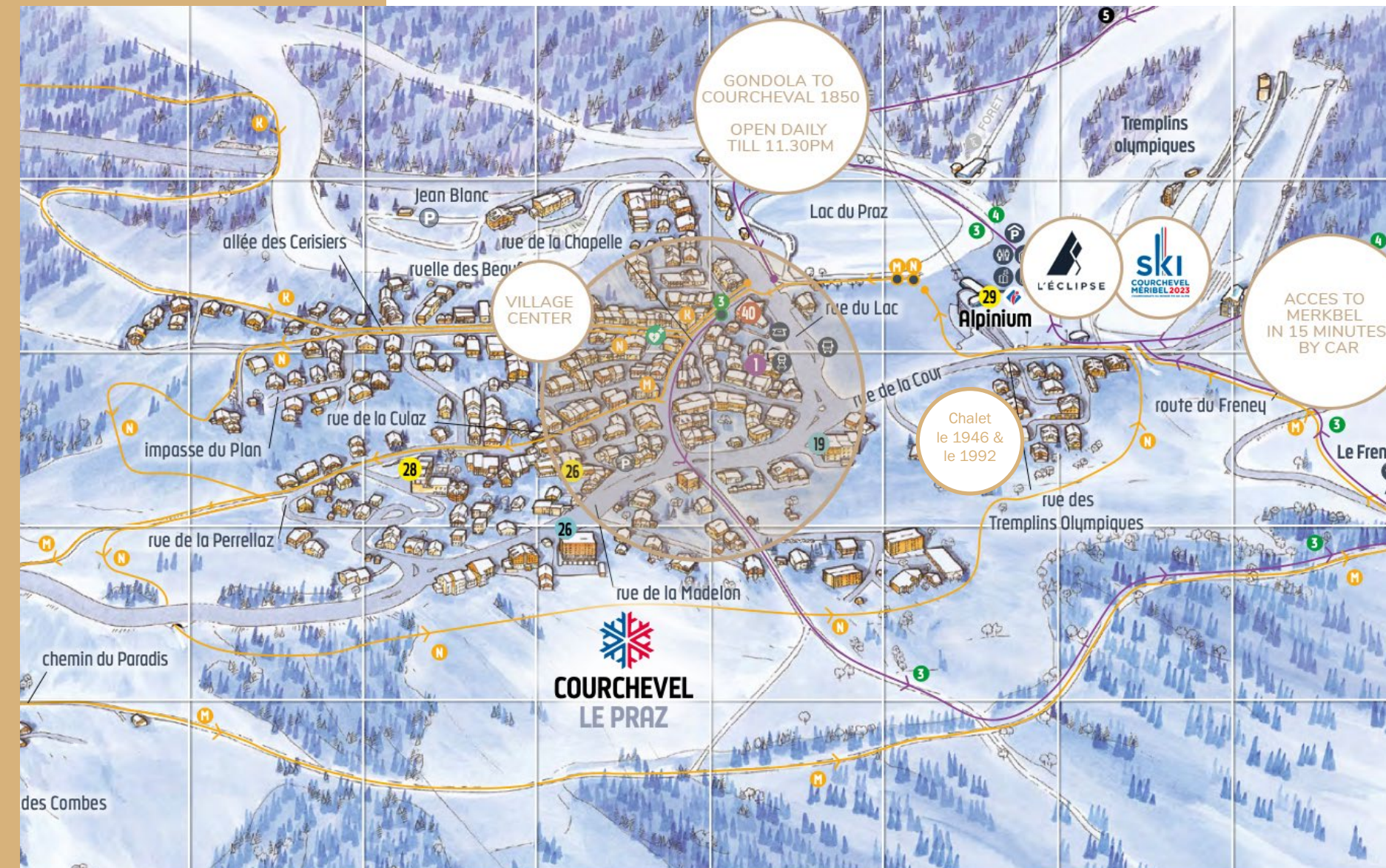
Finally, to save you precious time, we take care of ordering your ski passes so you can get straight out on the slopes of the 3 Valleys area.



Premium services

BENEFIT

Having grown up in the village and having learnt their expertise in the resort's grandest palaces, our children will guide you around Courchevel and the immense Three Valleys area. No fewer than 19 Michelin stars have been awarded to the top 11 restaurants. Your taste buds will be delighted! The resort is also full of fantastic experiences and leisure activities for all ages; let us help you to make your holiday perfect.



- 150 meters from the slopes and the gondola
- 150 meters from the village and these shops
- 8 minutes from Courchevel 1850 thanks to the PRAZ gondola and open every day until 11.30pm
- 15 minutes from Meribel by car
- Host of the 2023 Ski World Championships on the Eclipse slopes next to the Chalets



See you soon
in Courchevel
Le Praz